

Public Document Pack



NOTICE OF MEETING

Meeting	Executive Member for Education and Skills Decision Day
Date and Time	Monday, 15th March, 2021 at 3.00 pm
Place	Virtual Teams Meeting - Microsoft Teams
Enquiries to	members.services@hants.gov.uk

John Coughlan CBE
Chief Executive
The Castle, Winchester SO23 8UJ

FILMING AND BROADCAST NOTIFICATION

This meeting is being held remotely and will be recorded and broadcast live via the County Council's website.

AGENDA

DEPUTATIONS

To receive any deputations notified under Standing Order 12.

KEY DECISIONS (NON-EXEMPT/NON-CONFIDENTIAL)

1. ADDITIONAL SPORTS FACILITIES AT DEER PARK SCHOOL, HEDGE END (Pages 3 - 18)

To consider a report of the Director of Culture, Communities and Business Services seeking spend approval for project proposals for additional sports facilities at Deer Park School.

2. ICKNIELD SCHOOL, ANDOVER (Pages 19 - 32)

To consider a report of the Director of Culture, Communities and Business Services seeking spend approval for project proposals in relation to Icknield School, Andover.

NON KEY DECISIONS (NON-EXEMPT/NON-CONFIDENTIAL)

3. STANMORE SCHOOL (Pages 33 - 46)

To consider a report of the Director of Culture, Communities and Business Services seeking spend approval for project proposals in relation to Stanmore School, Winchester.

4. SOUTH FARNBOROUGH JUNIOR SCHOOL (Pages 47 - 60)

To consider a report of the Director of Culture, Communities and Business Services seeking spend approval for the project proposal in relation to South Farnborough Junior School.

KEY DECISIONS (EXEMPT/CONFIDENTIAL)

None

NON KEY DECISIONS (EXEMPT/CONFIDENTIAL)

None

ABOUT THIS AGENDA:

On request, this agenda can be provided in alternative versions (such as large print, Braille or audio) and in alternative languages.

ABOUT THIS MEETING:

The press and public are welcome to observe the public sessions of the meeting via the webcast.

HAMPSHIRE COUNTY COUNCIL

Decision Report

Decision Maker:	Executive Member for Education and Skills
Date:	15 March 2021
Title:	Additional Sports Facilities at Deer Park School, Hedge End
Report From:	Director of Culture, Communities and Business Services

Contact names: Steve Clow and Bob Wallbridge

Tel: 01962 847858
01962 847894

Email: steve.clow@hants.gov.uk
bob.wallbridge@hants.gov.uk

Purpose of this Report

1. The purpose of this report is to seek spend approval to the project proposals for additional sports facilities at Deer Park School, Hedge End.

Recommendations

2. That the Executive Member for Education and Skills grants spend approval to the project proposals for additional sports facilities at Deer Park School at a cost of £2,448,000.

Executive Summary

3. Deer Park School is a new secondary Free School currently under construction in Hedge End, being delivered by the County Council for the Department for Education (DfE). It is located within the Woodhouse Meadows part of the County Council's residential Uplands Development and is scheduled to open in September 2021.
4. The outline planning consent for the Woodhouse Meadows site conferred an obligation on the County Council as developer, through a Section 106 Agreement with Eastleigh Borough Council as local planning authority, to design and procure additional sports facilities at the school on behalf of the Borough Council to support its wider use by the community.
5. The proposed additional sports facilities comprise a floodlit 3G artificial turf sports pitch together with an extension to the school sports building to provide community changing rooms and a multi-purpose room.

Together with other facilities being built at the school these will be the subject of a Community Use Agreement between the school, Wildern Academy Trust, and Eastleigh Borough Council (EBC).

6. The proposed additional sports facilities are funded by a specific contribution from the County Council as part of its Section 106 obligations, with the remainder of the funding being provided by EBC via a grant agreement.
7. A planning application for the floodlit artificial turf sports pitch was submitted to EBC in December 2020 and a decision is expected to be made in March 2021. Planning approval for the extension to the sports building was granted by EBC in January 2021 as a non-material amendment to their earlier planning consent for the school.
8. The detailed design and construction of the additional sports facilities will be procured as an addition to the main school construction contract, continuing with the same contractor currently building the school.
9. Construction of the additional sports facilities is expected to start on site during summer 2021 following completion of the main school facilities and be available for use in 2022.

Background

10. The project is included in the Children's Services Capital Programme, approved at the Executive Member for Children's Services decision day on 15 March 2021 which confirms the total budget of £2,448,000 for the additional sports facilities.
11. Deer Park School is a new secondary Free School currently under construction in Hedge End, being delivered by the County Council. It will be run by the Wildern Multi-Academy Trust and is scheduled to open in September 2021. This facility is subject to a 125-year lease from the County Council. The new school is located within the Woodhouse Meadows part of the County Council's wider residential Uplands Development.
12. The outline planning consent for the Woodhouse Meadows site conferred an obligation on the County Council as developer, through a Section 106 Agreement with EBC, to design and procure additional sports facilities at the school to support its wider use by the community. The brief and scope of these facilities has been determined by EBC and the project is being delivered on their behalf by the County Council.
13. The Section 106 Agreement included an obligation on the County Council to provide index-linked funding of £1,166,735 towards the cost of the additional sports facilities, with the remainder of the funding being provided by EBC.

Finance

14. Capital Expenditure:

The Capital Expenditure has already been approved in principle; the following table outline the breakdown of its distribution across the project.

Capital Expenditure	Current Estimate	Capital Programme
	£'000	£'000
Buildings	2,101	2,101
Fees	347	347
Total	2,448	2,448

15. Sources of Funding

Financial Provision for Total Scheme	Buildings £'000	Fees £'000	Total Cost £'000
1. From Own Resources			
a) Capital Programme (as above)			
2. From Other Resources			
a) Eastleigh Borough Council #	1,099	182	1,281
b) HCC Developer Contribution	1,002	165	1,167
Total	2,101	347	2,448

Approved by Eastleigh Borough Council Hedge End West End & Botley Local Area Committee (HEWEB) at its meeting of 2 March 2020 (item 42(6)), 28 September 2020 (item 69) and Cabinet minutes (22 Oct 2020: Item 139).

i. *Building Cost:*

Net Cost = £2,348/m²

Gross Cost = Not applicable as there is significant external works associated with this project

Cost Per Pupil Place = n/a

ii. *Furniture & Equipment:*

All loose furniture, fittings and equipment is being procured and funded by Eastleigh Borough Council.

iii. *School Balances:*

The school has the following level of balances:

Published revenue balance as at 31 March 2020: n/a – New Free School

Devolved capital as at 31 March 2020: n/a – New Free School

Revenue Issues:

iv. *Overview of Revenue Implications:*

	(a) Employee s £'000	(b) r £'000	Othe *Net Current Expenditur e £'000	(a+b) *Net Current Expenditur e £'000	(c) Capital es £'000	Charg	(a + b + c) Total Net Expenditur e £'000
Revenue Implication s Additional + / Reduction s							

Details of Site and Existing Infrastructure

16. Deer Park School is located on a site of approximately 9.8 hectares within the County Council owned Woodhouse Meadows development.
17. The school site is divided by a line of protected mature woodland and a stream that separates the main school and sports hall from the school playing fields to the south. A pedestrian bridge through the woodland and over the stream provides access to the playing fields. A separate grounds maintenance and emergency vehicular access to the playing fields is provided from the south-east corner of the site.
18. The new floodlit artificial turf pitch will be located on the school playing fields, replacing one of the grassed pitches. The extension to the sports building is on the northern part of the site, near the main school building.
19. The services infrastructure currently under construction for the school will have sufficient capacity for the proposed additional sports facilities.
20. School and community access to the additional sports facilities will be the same as that currently under construction for the school, including the access road through the development, the school car park and pedestrian bridge through the woodland.

Scope of the Project

21. The additional sports facilities comprise a two-storey extension to the existing school sports hall to provide community changing rooms and a first-floor multi-purpose community room. There is also a floodlit 3G artificial turf pitch proposed with a small amount of spectator seating.

The Proposed Extension

22. The proposed extension to the school sports building comprises:
- Two team changing rooms for use by the community, including showers.
 - A first-floor multi-purpose community room, including a small kitchen and storage.
23. The extension is a compact rectangular form of the same construction and appearance of the existing sports building. It will have a high-performance roof with external brickwork and aluminium windows and doors.

External Works

24. The proposed external works comprise:
- A fenced floodlit 3G artificial sports pitch, with access paths.
 - A 50-seater capacity covered spectator shelter

Some ancillary works will be procured directly by EBC, including maintenance equipment, storage containers and team shelters, together with the maintenance access drive to the new pitch and some landscape planting.

25. The sports facilities will be available for community use outside of school hours. The existing school parking provision will also be made available for users and visitors, comprising 105 parking spaces (93 standard, 5 disabled, 4 two-wheeler and 3 minibus spaces) and 115 cycle spaces.

Planning

26. A planning application for the floodlit artificial turf sports pitch was submitted to EBC in December 2020 and a decision is to be made in March 2021. Planning approval for the extension to the sports building was

granted by EBC in January 2021 as a non-material amendment to their earlier planning consent for the school.

Construction Management

27. The detailed design and construction of the additional sports facilities will be procured as an addition to the main school construction contract, continuing with the same contractor currently building the school.
28. Construction of the additional sports facilities is expected to start on site during summer 2021 following completion of the school and be available for use in 2022.
29. The school site will remain in use during the construction period and local management arrangements will be put in place to manage the health and safety impact for all school users. Contractor working areas will be segregated from the school with two contractor's compounds, one for the extension to the sports building and one for the new artificial turf pitch.
30. No deliveries or movements of contractors' vehicles will take place at the start or end of the school day, in order to avoid traffic conflict when pupils are arriving at or departing from the school.

Building Management

31. Wildern Multi-Academy Trust will be responsible for the repair, maintenance and insurance responsibilities for the additional sports facilities in accordance with the 125-year lease for the school and its site.

Professional Resources

32. The contractor already appointed to build the school will complete the design and construct the proposed additional sports facilities using their consultant team, based on the initial proposals by the County Council's Property Services team, who will continue to oversee the overall design and delivery of the project.

Consultation and Equalities

33. A pre-planning application consultation was carried out in October 2020.
34. The following have been consulted during the development of this project. Refer also Appendix A:

35. Department for Education
 Wildern Multi Academy Trust
 Deer Park School Headteacher
 Deer Park School Trustees
 Hampshire County Council - Children's Services
 Executive Lead Member for Children's Services and Young People
 Executive Member for Education and Skills
 Councillor Tonia Craig - Hampshire County Council Member for Hedge End and West End South
 Councillor Rupert Kyrle - Hampshire County Council Member for Botley and Hedge End North
 Local residents
 Hampshire County Council Fire Officer
 Hampshire County Council Access Officer
 Hampshire County Council Planning Department
 Hampshire County Council - Economy, Transport and Environment
 Hampshire County Council Legal, Contract and Procurement team Policy & Resources
 Eastleigh Borough Council, Local Area Manager, Hedge End, West End and Botley
 Eastleigh Borough Council Corporate Project Manager
 Eastleigh Borough Council Planning Department
 Eastleigh Borough Council Ecologist
36. Equality impacts have been identified in the Equality Statement in Appendix B.

Risk & Impact Issues

Fire Risk Assessment

37. Deer Park School has been commissioned by the DfE, who do not require sprinklers to be fitted as a standard requirement, and on completion the building will be the responsibility of Wildern Academy Trust. As such it is therefore not subject to Hampshire County Council's fire sprinkler risk assessment.
38. As with the Deer Park school buildings currently under construction, the contractor will design the extension to the sports building, in respect to fire safety design and management, in accordance with BS 9999-2017. Using this British Standard, the contractor has determined that sprinklers are not required to meet the statutory minimum requirements of the Building Regulations and achieve compliance with Approved Document Part B and the DfE's Services Output Specification. The building does not include the use of any aluminium composite materials.

Health and Safety

39. Design risk assessments, pre-construction health & safety information and Health & Safety File will be produced in accordance with the Construction design and Management Regulations for the proposed scheme.

Climate Change

40. The project will incorporate the following features with respect to climate change:
- 41.
- The specification for the additional sports facilities will support the overall project objective of a BREEAM 'Excellent' rating.
 - The surface water drainage has been designed for a projected 1 in 100 year rainfall from the artificial turf pitch and to attenuate and filter its discharge into the stream.
42. The project will include the following features with respect to ecology and biodiversity:
- The floodlights for the artificial turf pitch will have back shields and a colour temperature to limit light spill and minimise their impact on the ecology.
 - Landscape planting to be carried out by EBC adjacent to the school site will achieve a net gain of 10% in biodiversity with respect to the replacement of a grassed pitch with the proposed artificial turf pitch
 - A construction environmental management plan will be in place

REQUIRED CORPORATE AND LEGAL INFORMATION:

Links to the Strategic Plan

Hampshire maintains strong and sustainable economic growth and prosperity:	yes
People in Hampshire live safe, healthy and independent lives:	yes
People in Hampshire enjoy a rich and diverse environment:	yes
People in Hampshire enjoy being part of strong, inclusive communities:	yes

Other Significant Links

Links to previous Member decisions:	
<u>Title</u>	<u>Date</u>
http://democracy.hants.gov.uk/ieDecisionDetails.aspx?ID=1087	08.05.2019
Direct links to specific legislation or Government Directives	
<u>Title</u>	<u>Date</u>

Section 100 D - Local Government Act 1972 - background documents

The following documents discuss facts or matters on which this report, or an important part of it, is based and have been relied upon to a material extent in the preparation of this report. (NB: the list excludes published works and any documents which disclose exempt or confidential information as defined in the Act.)

<u>Document</u>	<u>Location</u>
None	

EQUALITIES IMPACT ASSESSMENT:

1. Equality Duty

The County Council has a duty under Section 149 of the Equality Act 2010 ('the Act') to have due regard in the exercise of its functions to the need to:

- Eliminate discrimination, harassment and victimisation and any other conduct prohibited by or under the Act with regard to the protected characteristics as set out in section 4 of the Act (age, disability, gender reassignment, marriage and civil partnership, pregnancy and maternity, race, religion or belief, sex and sexual orientation);
- Advance equality of opportunity between persons who share a relevant protected characteristic within section 149(7) of the Act (age, disability, gender reassignment, pregnancy and maternity, race, religion or belief, sex and sexual orientation) and those who do not share it;
- Foster good relations between persons who share a relevant protected characteristic within section 149(7) of the Act (see above) and persons who do not share it.

Due regard in this context involves having due regard in particular to:

- The need to remove or minimise disadvantages suffered by persons sharing a relevant protected characteristic that are connected to that characteristic;
- Take steps to meet the needs of persons sharing a relevant protected characteristic that are different from the needs of persons who do not share it;
- Encourage persons sharing a relevant protected characteristic to participate in public life or in any other activity in which participation by such persons is disproportionately low.

2. Equalities Impact Assessment:

See Equalities Impact Assessment undertaken for the main Deer Park School project dated 26.04.19 as reported to Executive Member for Education and Skills on 8 May 2019.

FEEDBACK FROM CONSULTEES:**OTHER EXECUTIVE MEMBERS:**

Executive Member & Portfolio	Reason for Consultation	Date Consulted	Response:
Councillor Patricia Stallard, Executive Lead Member for Children's Services and Young People	Portfolio Holder		

OTHER FORMAL CONSULTEES:

Member/ Councillor	Reason for Consultation	Date Consulted	Response:
Councillor Tonia Craig	Local Member for Hedge End and West End South	Autumn 2020	
Councillor Rupert Kyrle	Local Member for Botley and Hedge End North	Autumn 2020	

Equality Impact Assessment



Hampshire
County Council

Additional Sports Facilities - Deer Park School, Hedge End, Eastleigh

Accountable officer: Mark Saunders

Email address: mark.saunders@hants.gov.uk

Department: Children's Services

Date of assessment: 25/02/2021

Description of current service/policy

Deer Park School is a new build 1050 (7FE) Secondary school comprising of a teaching and admin block and a separate sports hall, car parking external social areas and playing fields. The school is currently under construction and due to open in September 2021.

Geographical impact: Eastleigh

Description of proposed change

The additional sports facilities will comprise of a two-storey extension to the existing school sports hall to contain community changing rooms and a first-floor multi-purpose community room. There is also a floodlit 3G artificial turf pitch proposed with a small amount of spectator seating. The additional sports facilities will be available for community use outside of school hours and therefore improve access to the local residents.

Impacts of the proposed change

This impact assessment covers Service users

Engagement and consultation

Has engagement or consultation been carried out? Yes

A pre-planning application consultation took place in October 2020 to engage with the general

public in relation to the application proposals. The consultation took place virtually.

The following have also been consulted;

- Department for Education
- Wildern Multi Academy Trust
- Deer Park School Headteacher
- Deer Park School Trustees
- Hampshire County Council - Children's Services
- Executive Lead Member for Children's Services and Young People
- Executive Member for Education and Skills
- Councillor Tonia Craig - Hampshire County Council Member for Hedge End and West End South Autumn 2020
- Councillor Rupert Kyrle - Hampshire County Councillor

Statutory considerations	Impact	Mitigation
Age: Neutral		
Disability: Positive	The all weather surface will improve the access to sports for users with a range of SEND requirements	
Sexual orientation: Neutral		
Race: Neutral		
Religion and belief: Neutral		
Gender reassignment: Neutral		

Gender: Neutral		
Marriage and civil partnership: Neutral		
Pregnancy and maternity: Neutral		
Other policy considerations	Impact	Mitigation
Poverty: Neutral		
Rurality: Neutral		

Neutrality statement (if all considerations have a neutral impact)

Any other information

**Deer Park School
Eastleigh Borough Council Additional Sports
Facilities**

Key - Proposals:

- A** Proposed Flood Lit Artificial Pitch (HCC)
- B** Proposed Sports Hall Extension (Non-material amendment)
- C** Existing Deer Park School (Under Construction)
- D** Proposed Community Sports Pitches (not on school site to be delivered by Eastleigh Borough Council)

1. Existing Deer Park School Building (under construction)
2. Proposed Deer Park Sports Hall Extension
3. Proposed 106 x 70m Artificial Grass 3G Pitch, including 8 x Lighting columns
4. Existing Secondary School Playing Fields (under construction)
5. Existing Rugby Pitch (under construction)
6. Existing Cricket Pitch (under construction)
7. Existing Football Pitch (under construction)
8. Proposed Wildlife Corridor/Hedge
9. Existing Hockey Pitch (under construction)
10. Existing Athletic Running Track (under construction)
11. Existing Swale (under construction)
12. Proposed Equipment Stores
13. Proposed Lobby
14. Proposed Changing and Showers
15. Proposed WC's
16. Proposed Store
17. Proposed Community Space
18. Proposed Kitchenette/Servery

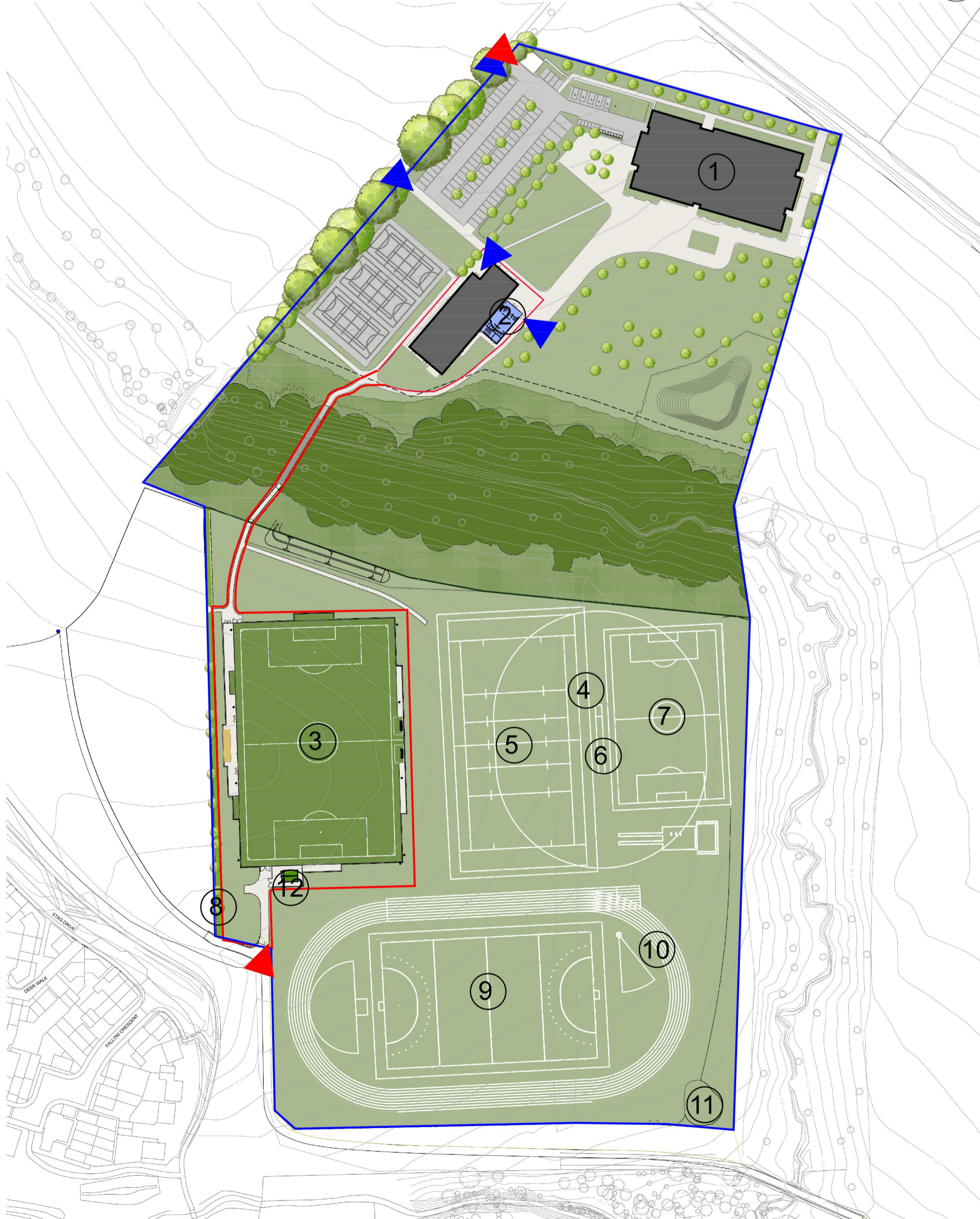
- Site Boundary
- HCC Ownership Boundary
- Vehicular Access
- Pedestrian Access
- Non-teaching - New Build
- Circulation



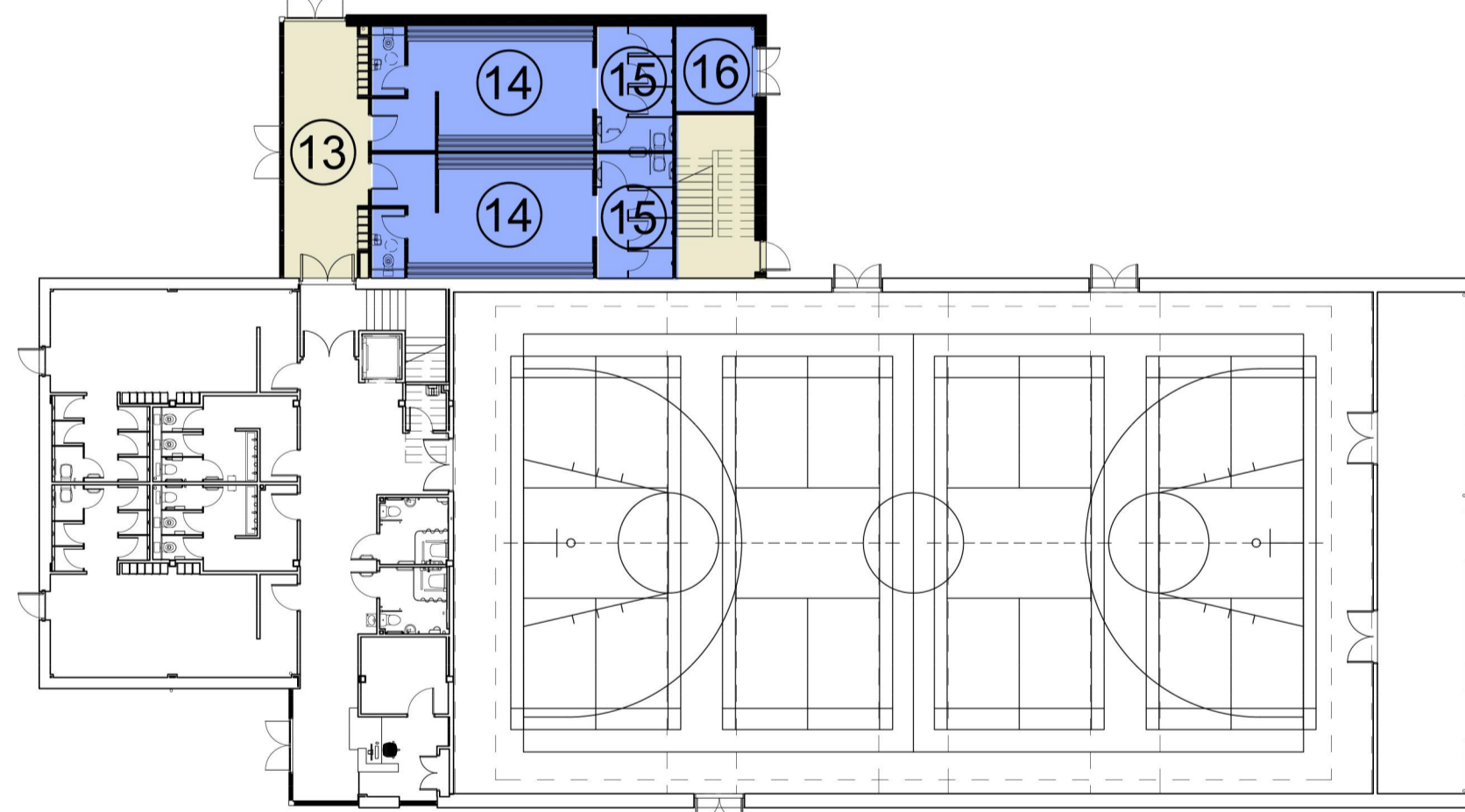
Proposed Location Plan



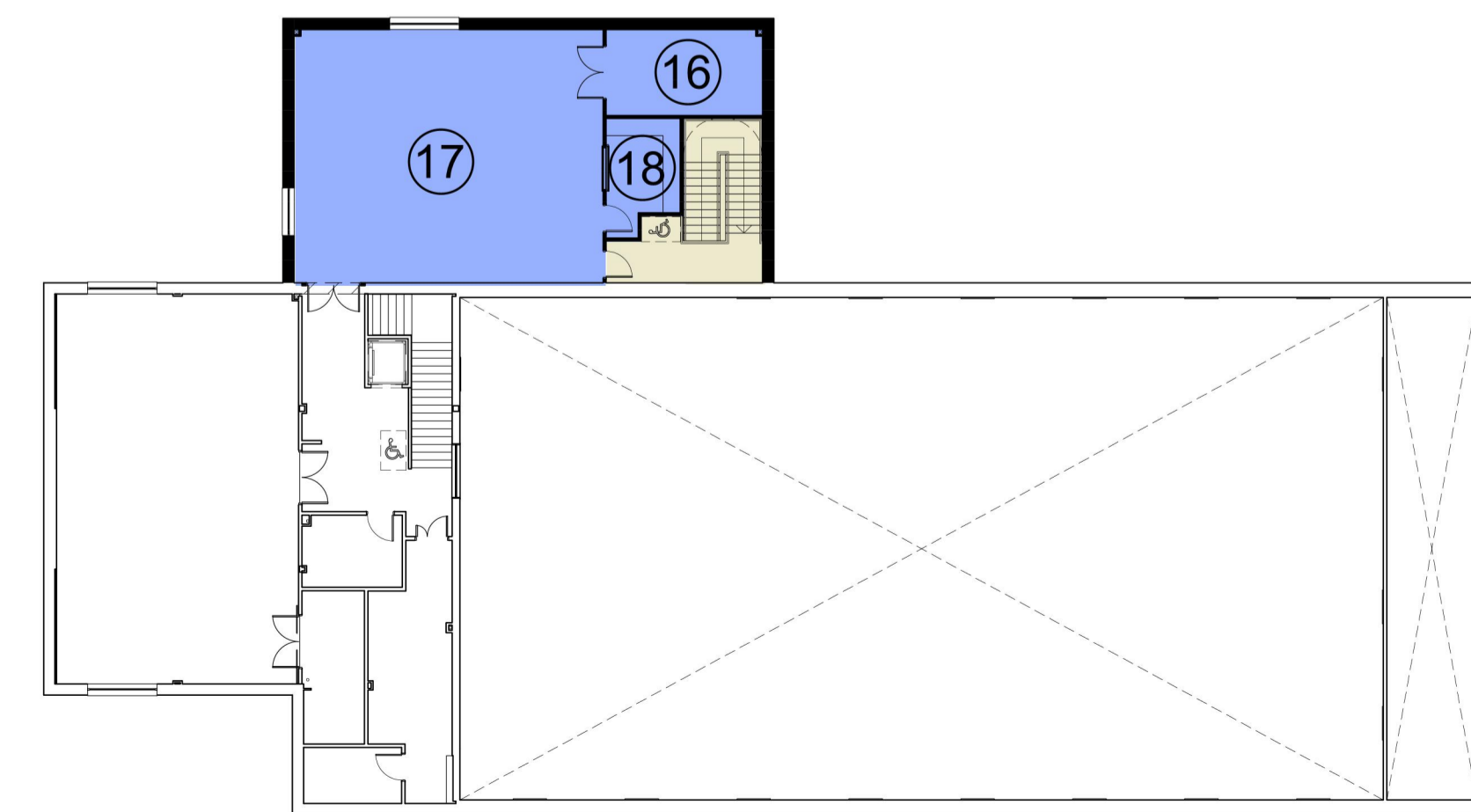
Proposed Views of 3G Sports Pitch



Proposed Site Plan



Proposed Sports Hall Extension - Ground Floor Plan (Non-material amendment)



Proposed Sports Hall Extension - First Floor Plan (Non-material amendment)

This drawing is © copyright Hampshire County Council 2021. No unauthorised reproduction permitted. All rights reserved.
No dimensions are to be scaled from this drawing

Project Appraisal

Not to Scale
P12543-HCC-XX-ZZ-DR-A-SK100-Rev P2
February 2021

This page is intentionally left blank

HAMPSHIRE COUNTY COUNCIL

Decision Report

Decision Maker:	Executive Member for Education and Skills
Date:	15 March 2021
Title:	Icknield School, Andover
Report From:	Director of Culture, Communities and Business Services

Contact names: Steve Clow and Bob Wallbridge

Tel: 01962 847858
01962 847894

Email: steve.clow@hants.gov.uk
bob.wallbridge@hants.gov.uk

Purpose of this Report

1. The purpose of this report is to seek spend approval to the project proposals for the refurbishment, remodelling and minor expansion of Icknield School, Andover.

Recommendations

2. That the Executive Member for Education and Skills, grants spend approval to the project proposals for Icknield School at a maximum total cost of £2,500,000.

Executive Summary

3. Icknield School is a Special Educational Need (SEN) School, providing education for children aged between 3 and 19 years old with Severe Learning Difficulties (SLD) and complex needs. The proposals will increase the capacity of the school's main campus on River Way by 10 pupils to 75.
4. The project provides proposals for three new classrooms, a staff planning and workspace and associated ancillary sanitary accommodation together with refurbishment of the existing internal teaching and circulation spaces and improvement to external spaces
5. The project is included in the Children Services Capital Programme, approved at the Executive Lead Member for Children's Services Decision Day on 13 January 2021 with a maximum budget of £2,500,000.
6. A planning application will be submitted in April 2021 with a decision expected to be made in summer 2021.

Background

7. Icknield School provides SEN education for children with severe learning difficulties and complex needs ages between 3 and 19 years old. The school is located across two sites with 3-16 year old pupils at River Way, Andover and the Post16 provision located within a former residential property on Vigo Road, to the east of Andover. These proposals will increase the permanent overall capacity of the school from 78 places to 88 places. There are currently 81 pupils on roll across both campuses.
8. The project is included in the Children's Services Capital Programme, approved at the Executive Lead Member for Children's Services and Young People decision day on 13 January 2021, which outlined the available budget for the project.
9. These works will provide three new specialist classrooms at the River Way campus and address some of the existing condition issues and shortfalls in appropriate teaching and sanitary accommodation and upgrade the external learning environment.
10. The pupil numbers attending the school are planned to increase by up to 10 places as a result of these proposals.

Finance

11 Capital Expenditure:

The Capital Expenditure has already been approved in principle; the following table outline the breakdown of its distribution across the project.

Capital Expenditure	Current Estimate £'000	Capital Programme £'000
Buildings	2,146	2,146
Fees	354	354
Total	2,500	2,500

12. Sources of Funding

Financial Provision for Total Scheme	Buildings £'000	Fees £'000	Total Cost £'000
1. From Own Resources			
a) Capital Programme (as above)	2,146	354	2,500
Total	2,146	354	2,500

- i. *Building Cost:*
 Net Cost = £2,810
 Gross Cost = £3,718

Cost Per Pupil Place = The cost per pupil metric isn't suitable for this project as part of the scheme provides accommodation to deal with an existing shortfall in area as well as providing new accommodation for the 10 new pupils.

ii. *Furniture & Equipment:*

Included in the above figures is an allocation of £99,100 for the provision of all loose furniture, fittings, equipment and I.T. (inclusive of fees).

iii. *School Balances:*

The school has the following level of balances:

Published revenue balance as at 31 March 2020: £25,696.55

Devolved capital as at 31 March 2020: £8,960.05

Revenue Issues:

iv. *Overview of Revenue Implications:*

	(a) Employee s £'000	(b) r £'000	Othe *Net Current Expenditur e £'000	(a+b) es £'000	(c) Capital Charg es £'000	(a + b + c) Total Net Expenditur e £'000
Revenue Implication s Additional + / Reduction s	0	0	0	0	138	138

Details of Site and Existing Infrastructure

13. The school is located across two sites with 3 – 16 year old pupils at River Way, Andover and the Post16 provision located within a former residential property on Vigo Road, to the east of Andover.
14. The River Way site is a relatively small site located between residential housing and the Walworth Light Industrial Estate. The existing school building is a SCOLA 2 system building originally built in the late 1960's and extended with a 3 classroom extension. The original building is single storey and the extension is also single storey mono-pitched roof with traditional masonry with timber cladding external walls with and painted metal windows.
15. There is a one way vehicular access from River Way with parking for 3 minibuses, egress is onto Spey Court. The main school car park is to the north of the site located on land owned by Test Valley Borough Council. The informal and formal hard and soft play areas are located to the east, for early years, and

to the south of the site for older pupils. The formal hard play area to the south acts as a managed drop-off and pick up area for pupils arriving in taxis.

16. The existing services infrastructure to the site are sufficient to accommodate the project proposals.

Scope of the Project

17. The proposed project comprises a three-classroom extension, internal alteration and refurbishment of the existing building to address condition and small group teaching/storage needs and improvements to external learning areas.

The Proposed Building

18. The proposed extension and alternations comprise:
 - Three new classrooms
 - Associated sanitary accommodation
 - Hygiene room
 - Learning Resource Area
 - Staff PPA/Work space
 - Internal refurbishment to include redecoration, new floor finishes, ceiling and light fittings to all existing classrooms
 - Internal refurbishment to ancillary sanitary accommodation
19. The proposed extension will be built as a framed construction, finished externally in traditional masonry and timber cladding to match the existing, with aluminium windows and doors. The roof will be mono-pitched metal roof to match the existing building.

External Works

20. The proposed external works comprise:
 - External covered teaching areas adjacent to existing classrooms
 - Construction of external ramp
 - Relocated play equipment
 - Reconfiguration of early years play area to east of site
21. There are no significant changes planned to the existing staff, visitor parking or vehicular routes as these are already sufficient to meet requirements.

Planning

22. A planning application will be submitted in April 2021 with a decision expected to be made in summer 2021.

Construction Management

23. The school site will remain in use during the construction period and local management arrangements will be put in place to manage the health and

safety impact for all school users. The contractor will access the school site via River Way. Contractor access and working areas will be segregated from the school users.

24. No deliveries or movements of vehicles will take place at the start or end of the school day, in order to avoid traffic conflict when pupils are arriving at or departing from the school.
25. The works have been procured through the Hampshire Construction Framework (HCF) and are anticipated to commence on site during autumn 2021 with the new building completing in the summer term 2022

Building Management

26. The existing building management arrangements will remain in place.

Professional Resources

- | | |
|--------------------------|--|
| 27. Architecture – | Culture, Communities & Business Services |
| Landscape – | Culture, Communities & Business Services |
| Interior Design - | Culture, Communities & Business Services |
| Mechanical & Electrical- | Culture, Communities & Business Services |
| Structural Engineering - | Culture, Communities & Business Services |
| Quantity Surveying - | Culture, Communities & Business Services |
| Principal Designer - | Culture, Communities & Business Services |
| Drainage Engineering - | Economy, Transport and Environment |

Consultation and Equalities

28. Children’s Services, together with Icknield School, have been consulted during the design development stages. A 4 week non-statutory consultation period was held from 11 November to 12 December 2020 where the outline design and proposals were shared with school parents, staff, governors and local residents. Unfortunately, due to the COVID 19 restrictions no drop-in event was not possible. Approval was given for the formal statutory consultation period and publication of Public Notices – this commenced on 15 January 2021. No objections were received for the application to expand Icknield School.
29. The following have been consulted during the development of this project and feedback can be seen in overview in Appendix A:

Headteacher
School Governors
Parents of current pupils
Other local stakeholders including other schools
Children’s Services
Executive Lead Member for Children’s Services
Local County & District Councillors
Local Residents

Fire Officer
Access Officer
Planning Department

Risk & Impact Issues

Fire Risk Assessment

30. With respect to fire safety and property protection, the proposals have been risk assessed in line with the agreed Property Services procedures, and confirmed that the provision of sprinklers is not required in this instance.
31. The proposals will meet the requirements of the Building Regulations (BB100 Fire Safety in Schools), including enhancements beyond minimum provision, and are consistent with current fire safety legislation, the partnership arrangement with Hampshire Fire and Rescue Services, and are in line with the County Council's policy to manage corporate risk.

Health and Safety

32. Design risk assessments, pre-construction health & safety information and Health & Safety File will be produced and initiated in accordance with the Construction design and Management Regulations for the proposed scheme.

Climate Change

33. The project will incorporate the following sustainability features:
 - A highly insulated building envelope for the extension including high performance windows, doors and rooflights
 - Provision of good levels of day lighting to all teaching areas to reduce the need for artificial lighting and energy use.
 - Energy efficient lighting and heating control
 - Extended roof canopies to avoid summer time overheating.
 - The use of timber from sustainable sources
 - A site waste management plan to ensure the principles of minimising waste are maintained during construction

REQUIRED CORPORATE AND LEGAL INFORMATION:

Links to the Strategic Plan

Hampshire maintains strong and sustainable economic growth and prosperity:	yes
People in Hampshire live safe, healthy and independent lives:	yes
People in Hampshire enjoy a rich and diverse environment:	yes
People in Hampshire enjoy being part of strong, inclusive communities:	yes

Links to previous Member decisions:	
<u>Title</u>	<u>Date</u>
Direct links to specific legislation or Government Directives	
<u>Title</u>	<u>Date</u>

Section 100 D - Local Government Act 1972 - background documents	
<p>The following documents discuss facts or matters on which this report, or an important part of it, is based and have been relied upon to a material extent in the preparation of this report. (NB: the list excludes published works and any documents which disclose exempt or confidential information as defined in the Act.)</p>	
<u>Document</u>	<u>Location</u>
None	

EQUALITIES IMPACT ASSESSMENT:

1. Equality Duty

The County Council has a duty under Section 149 of the Equality Act 2010 ('the Act') to have due regard in the exercise of its functions to the need to:

- Eliminate discrimination, harassment and victimisation and any other conduct prohibited by or under the Act with regard to the protected characteristics as set out in section 4 of the Act (age, disability, gender reassignment, marriage and civil partnership, pregnancy and maternity, race, religion or belief, sex and sexual orientation);
- Advance equality of opportunity between persons who share a relevant protected characteristic within section 149(7) of the Act (age, disability, gender reassignment, pregnancy and maternity, race, religion or belief, sex and sexual orientation) and those who do not share it;
- Foster good relations between persons who share a relevant protected characteristic within section 149(7) of the Act (see above) and persons who do not share it.

Due regard in this context involves having due regard in particular to:

- The need to remove or minimise disadvantages suffered by persons sharing a relevant protected characteristic that are connected to that characteristic;
- Take steps to meet the needs of persons sharing a relevant protected characteristic that are different from the needs of persons who do not share it;
- Encourage persons sharing a relevant protected characteristic to participate in public life or in any other activity in which participation by such persons is disproportionately low.

2. Equalities Impact Assessment:

Please see Appendix B

FEEDBACK FROM CONSULTEES:**OTHER EXECUTIVE MEMBERS:**

Executive Member & Portfolio	Reason for Consultation	Date Consulted	Response:
Councillor Patricia Stallard, Executive Lead Member for Children's Services and Young People	Portfolio Holder		

OTHER FORMAL CONSULTEES:

Member/ Councillor	Reason for Consultation	Date Consulted	Response:
Councillor K North	Local Member for Andover North	14/05/20 & 02/11/20	Extremely supportive of project to improve the learning environment of the School

Your reference number is EIA310623018.

Thank you for submitting Equality Impact Assessment

Name of project or proposal (required): Icknield School Expansion

Is this project a Transformation project? (required): Neither

Name of accountable officer (required): Christine Jones

Email (required): strategicplanningunit@hants.gov.uk

Department (required): Children's Services

Date of assessment (required): 24/02/2021

Is this a detailed or overview EIA? (required): Overview

Describe the current service or policy. This question has a limit of 700 characters; approximately 100 words (required): Icknield School is a 78 place special school catering for 3-19 year old pupils with Severe Learning Difficulties, (SLD), Profound and Multiple Learning Difficulties (PMLD) and other complex needs. The school is successfully meeting the needs of children with a range of difficulties in a safe and secure environment.

Geographical impact (required): Test Valley

Describe the proposed change. This question has a limit of 700 characters; approximately 100 words (required): The County Council is proposing to undertake remodelling and refurbishment works, including a small expansion - these works will allow the school to increase the capacity on the main site by up to additional 10 places from September 2022. The works will provide additional internal teaching accommodation to enable more children to attend the school and also improve the overall internal and external learning environment for all pupils. This will give a final overall capacity of 88 places at Icknield School.

Who does this impact assessment cover? (required): Service users

Has engagement or consultation been carried out? (required): Yes

Describe the consultation or engagement you have performed or are intending to perform. This question has a limit of 700 characters; approximately 100 words (required): Formal consultation took place between 13 November 2020 and 11 December 2020. A letter was sent to consultees as detailed below. No drop-in event could be held due to Covid-19 restrictions but consultees were invited to send any feedback by email or telephone. The proposal was also included on the County Council's consultation website.

Letters were sent to;

Parents of children at the school

Local residents

Headteacher

Chair of Governors

School staff

Headteachers, CoGs at all schools within 2 miles and special schools in the district

Local Councillors at TVBC

Local dioceses

Staff union representatives

Local MP

HCC Elected member

One comment regarding staff car parking was received.

Age (required): Neutral

Disability (required): Positive

Impact (required): The proposal will provide more facilities for 3-19 year old pupils with Severe Learning Difficulties, (SLD), Profound and Multiple Learning Difficulties (PMLD) and other complex needs, and allow more pupils to attend the school.

Sexual orientation (required): Neutral

Race (required): Neutral

Religion or belief (required): Neutral

Gender reassignment (required): Neutral

Gender (required): Neutral

Marriage or civil partnership (required): Neutral

Pregnancy and maternity (required): Neutral

Poverty (required): Neutral

Rurality (required): Neutral

Any other brief information which you feel is pertinent to this assessment (optional):

Please confirm that the accountable officer has agreed the contents of this form (required): Yes

This page is intentionally left blank

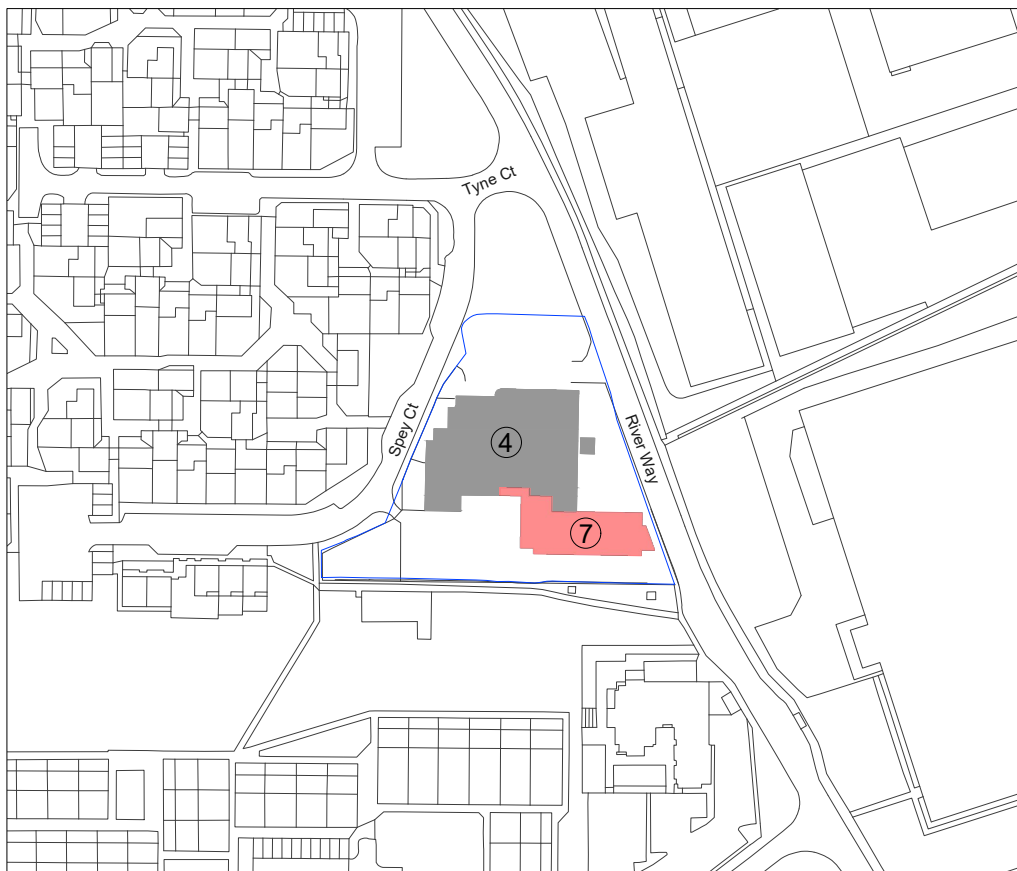
Icknield School
10 pupil place expansion and facilities upgrade

Special School - Ages 3-19 (75)

Project Appraisal

- Key**
- 1 Existing staff car park (leased to HCC by Test Valley)
 - 2 Mini bus parking / drop off
 - 3 Main entrance / reception
 - 4 Existing building
 - 5 Early years play area
 - 6 Proposed landscape / access
 - 7 Proposed new build
 - 8 Proposed landscape / playground
 - 9 Proposed ramp
 - 10 Hard play area
 - 11 Existing sensory garden
 - 12 Replacement concrete deck and canopy to KS2 classrooms
 - 13 PMLD external teaching area

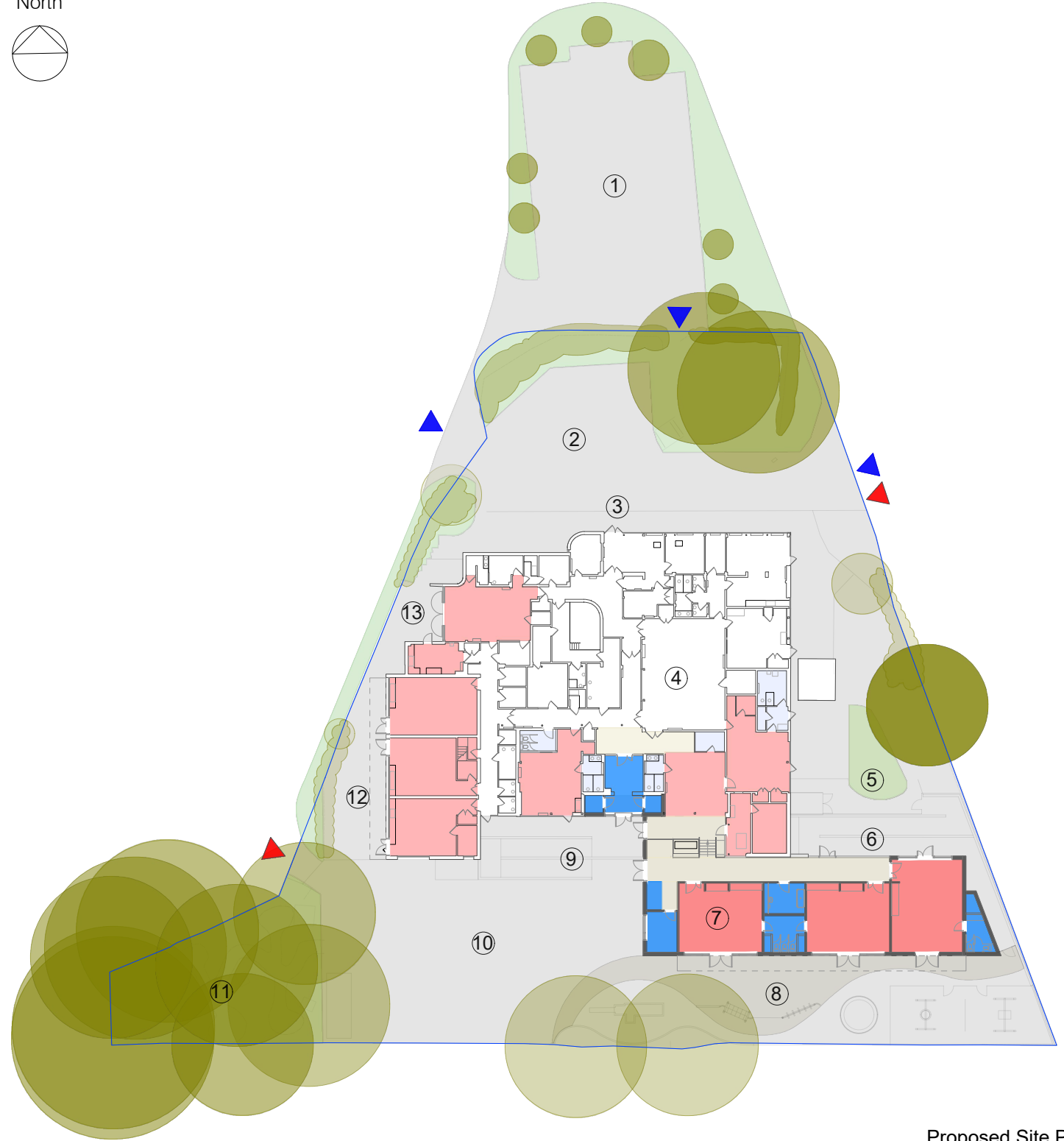
- General Teaching - New Build
- General Teaching - Refurb.
- Non-Teaching - New Build
- Non-Teaching - Refurb.
- Circulation
- Existing Pedestrian Access
- Existing Vehicular Access
- Site Boundary - HCC Ownership



Location Plan



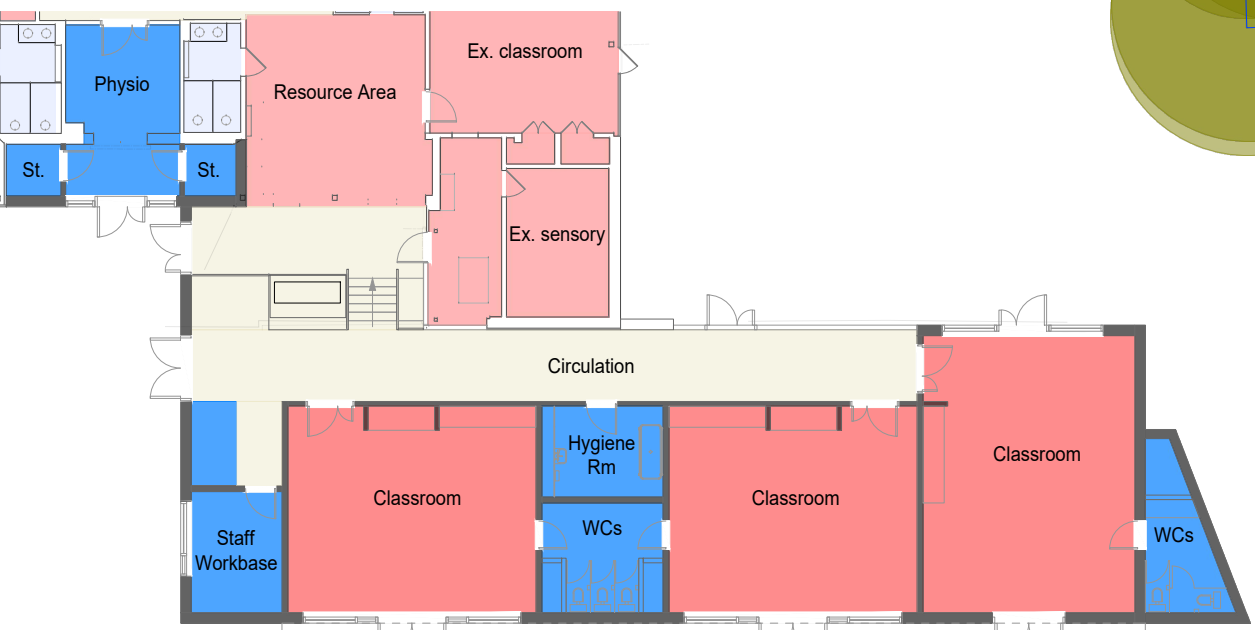
North



Proposed Site Plan



3D View of Proposals



Proposed Ground Floor Plan - New Build



Proposed South Elevation

0 25 M

NTS @ A3
P12690-HCC-00-DR-A-EME
 February 2021

This page is intentionally left blank

HAMPSHIRE COUNTY COUNCIL

Decision Report

Decision Maker:	Executive Member for Education and Skills
Date:	15 March 2021
Title:	Stanmore Primary School, Winchester
Report From:	Director of Culture, Communities and Business Services

Contact names: Steve Clow and Bob Wallbridge

Tel: 01962 847858
01962 847894

Email: steve.clow@hants.gov.uk
bob.wallbridge@hants.gov.uk

Purpose of this Report

1. The purpose of this report is to seek spend approval to the project proposals at Stanmore Primary School, Winchester.

Recommendations

2. That the Executive Member for Education and Skills, grants spend approval to the project proposals for Stanmore Primary School at the total cost of £500,000.

Executive Summary

3. Stanmore Primary School currently provides education for up to 315 children (1.5 Forms of Entry) aged between 4 and 11 years old. It is not intended that the proposals will increase the school's capacity.
4. The project comprises proposals for a new school reception area, a refurbished Senior Leadership Team (SLT) office, a relocated waiting area, new double-glazed external screens, other minor refurbishments and a rationalised staff car park to the north of the site.
5. The project is included in the Children Services Capital Programme, approved at the Executive Lead Member for Children's Services Decision Day on 13 January 2021 with a budget of £500,000.
6. A Planning application was submitted in February 2021 with determination anticipated during summer 2021.

Background

7. Stanmore Primary School provides education for children aged between 4 and 11 years old. There are currently 241 pupils on roll, the pupil numbers attending the school are not currently planned to increase as a result of these proposals.
8. The project is included in the Children's Services Capital Programme, approved at the Executive Lead Member for Children's Services decision day on 13 January 2021, which outlines the available budget for the project.
9. Stanmore Primary School was built in 1929, the existing building is predominantly single storey, with some 2 storey elements to the school frontage. The building are of traditional construction with pitched roofs, external elevations of brick with timber cladding to the circulation corridors and painted single glazed, metal windows.
10. These proposals seek to address shortcomings in the existing accommodation and will provide a new school reception to improve access and safeguarding, address some of the existing building condition issues and improve staff car parking.

Finance

11 Capital Expenditure:

The Capital Expenditure has already been approved in principle; the following tables outline the breakdown of its distribution across the project.

Capital Expenditure	Current Estimate £'000	Capital Programme £'000
Buildings	429	429
Fees	71	71
Total	500	500

12. Sources of Funding

Financial Provision for Total Scheme	Buildings £'000	Fees £'000	Total Cost £'000
1. From Own Resources			
a) Capital Programme (as above)	0	0	0
2. From Other Resources			
b) Capital Receipt	429	71	500
Total	429	71	500

- i. *Building Cost:* Cost Manager to update
 Net Cost = not applicable (due to small scale / type of works)
 Gross Cost = not applicable (due to small scale / type of works)

Cost Per Pupil Place = n/a no additional pupils.

ii. *Furniture & Equipment:*

Included in the above figures is an allocation of £9,740.00 for the provision of all loose furniture, fittings, equipment and I.T. (inclusive of fees).

iii. *School Balances:*

The school has the following level of balances:

Published revenue balance as at 31 March 2020: £121,988.95

Devolved capital as at 31 March 2020: £40,093.28

Revenue Issues:

iv. *Overview of Revenue Implications:*

	(a) Employee s £'000	(b) r £'000	Othe *Net Current Expenditur e £'000	(a+b) Net Current Expenditur e £'000	(c) Capital es £'000	Charg	(a + b + c) Total Net Expenditur e £'000
Revenue Implication s Additional + / Reduction s	0	0	0	0	28		28

Details of Site and Existing Infrastructure

13. Stanmore Primary School is a 1.5FE all through primary school, located off Stanmore Lane, Winchester.
14. Stanmore Primary School was built in 1929. It has two teaching wings to the north and south in a U-shaped plan with the existing reception, main hall and kitchen to the east connecting the two teaching wings.
15. The existing school site has a significant change in levels from Stanmore Lane which rises up to the existing building. The school entrance is reached via a flight of steps and is not visible from the pedestrian footpath. There are also a number of level changes across the internal floorplan of the building. The site levels out to the wider playing fields to the west.
16. The existing services infrastructure to the site are sufficient to accommodate the project proposals.

Scope of the Project

18. The proposed works include a new reception extension to the north, together with refurbished office and ancillary support accommodation, replacement external glazed screens and improvements to the existing staff car park.

The Proposed Building

19. The proposed building works comprise:
- New admin office and reception
 - Secure draught lobby
 - Waiting area
 - Small group room
 - Replacement external double-glazed screens
 - Replacement fire doors to circulation corridor
20. The proposed extension will be of single storey loadbearing construction, finished externally with brickwork to match existing, with aluminium windows and doors. The construction will have a high-performance roof covering.

External Works

21. The proposed external works comprise:
- External steps and landing to new reception building
 - Adjustment of ground levels around the proposed extension
 - New fence and gate to staff carpark
 - White lining to car park to create an accessible parking space
 - Other fencing to east and south of school building to improve safe-guarding
22. The project will also provide additional informal car parking on the school site to the south of the existing building. A new vehicular gate and fencing will be provided to the south of the school building from the access road off Stanmore Lane.

Planning

23. A planning application was submitted in February 2021 with a decision to be made during summer 2021.

Construction Management

24. The school site will remain in use during the construction period and local management arrangements will be put in place to manage the health and safety impact for all school users. The contractor will access the school site via the main access road from Stanmore Lane. Contractor access and

working areas will be segregated from the school users with the compound being located in the location of the existing staff car park to the north of the site.

25. No deliveries or movements of vehicles will take place at the start or end of the school day, in order to avoid traffic conflict when pupils are arriving at or departing from the school.
26. The works will be procured through the Minor Works Framework and are anticipated to commence on site during the autumn term with the new building completing in the spring term 2022.

Building Management

27. The existing building management arrangements will remain in place.

Professional Resources

- | | | |
|-----|--|--|
| 28. | Architectural – | Culture, Communities & Business Services |
| | Landscape – | Culture, Communities & Business Services |
| | Mechanical & Electrical-
Structural Engineering - | Culture, Communities & Business Services |
| | Quantity Surveying - | Culture, Communities & Business Services |
| | Principal Designer - | Culture, Communities & Business Services |
| | Drainage Engineering - | Economy, Transport and Environment |

Consultation and Equalities

29. Children’s Services and Stanmore Primary School have been consulted during the design development stages. Unfortunately, due to the COVID 19 pandemic a public drop-in event was not possible.
30. The following have been consulted during the development of this project and feedback can be seen in overview in Appendix A:

Headteacher
School Governors
Children’s Services
Executive Lead Member for Children’s Services
Local County Councillor
Local Residents
Fire Officer
Access Officer
Planning Department

Risk & Impact Issues

Fire Risk Assessment

31.

With respect to fire safety and property protection, the proposals have been risk assessed in line with the agree Property Services procedures and confirmed that the provision of sprinklers is not required in this instance.

The proposals will meet the requirements of the Building Regulations (BB100 Fire Safety in Schools), including enhancements beyond minimum provision, and are consistent with current fire safety legislation, the partnership arrangement with Hampshire Fire and Rescue Services, and are in line with the County Council's policy to manage corporate risk.

32. **Health and Safety**

Design risk assessments, pre-construction health & safety information and Health & Safety File will be produced and initiated in accordance with the Construction design and Management Regulations for the proposed scheme.

33. **Climate Change**

The project will incorporate the following sustainability features:

- A highly insulated building envelope for the extension including high performance windows, doors and rooflights
- Provision of good levels of day lighting to reduce the need for artificial lighting and energy use.
- Energy efficient lighting and heating controls
- The use of timber from sustainable sources.
- A site waste management plan to ensure the principles of minimising waste are maintained during construction

REQUIRED CORPORATE AND LEGAL INFORMATION:

Links to the Strategic Plan

Hampshire maintains strong and sustainable economic growth and prosperity:	yes/no
People in Hampshire live safe, healthy and independent lives:	yes/no
People in Hampshire enjoy a rich and diverse environment:	yes/no
People in Hampshire enjoy being part of strong, inclusive communities:	yes/no

Other Significant Links

Links to previous Member decisions:	
<u>Title</u>	<u>Date</u>
Direct links to specific legislation or Government Directives	
<u>Title</u>	<u>Date</u>

Section 100 D - Local Government Act 1972 - background documents

The following documents discuss facts or matters on which this report, or an important part of it, is based and have been relied upon to a material extent in the preparation of this report. (NB: the list excludes published works and any documents which disclose exempt or confidential information as defined in the Act.)

<u>Document</u>	<u>Location</u>
None	

EQUALITIES IMPACT ASSESSMENT:

1. Equality Duty

The County Council has a duty under Section 149 of the Equality Act 2010 ('the Act') to have due regard in the exercise of its functions to the need to:

- Eliminate discrimination, harassment and victimisation and any other conduct prohibited by or under the Act with regard to the protected characteristics as set out in section 4 of the Act (age, disability, gender reassignment, marriage and civil partnership, pregnancy and maternity, race, religion or belief, sex and sexual orientation);
- Advance equality of opportunity between persons who share a relevant protected characteristic within section 149(7) of the Act (age, disability, gender reassignment, pregnancy and maternity, race, religion or belief, sex and sexual orientation) and those who do not share it;
- Foster good relations between persons who share a relevant protected characteristic within section 149(7) of the Act (see above) and persons who do not share it.

Due regard in this context involves having due regard in particular to:

- The need to remove or minimise disadvantages suffered by persons sharing a relevant protected characteristic that are connected to that characteristic;
- Take steps to meet the needs of persons sharing a relevant protected characteristic that are different from the needs of persons who do not share it;
- Encourage persons sharing a relevant protected characteristic to participate in public life or in any other activity in which participation by such persons is disproportionately low.

2. Equalities Impact Assessment:

Please see Appendix B

FEEDBACK FROM CONSULTEES:**OTHER EXECUTIVE MEMBERS:**

Executive Member & Portfolio	Reason for Consultation	Date Consulted	Response:
Councillor Patricia Stallard, Executive Lead Member for Children's Services and Young People	Portfolio Holder		

OTHER FORMAL CONSULTEES:

Member/ Councillor	Reason for Consultation	Date Consulted	Response:
Councillor Tod	Local Member for Westgate, Winchester		

Equality Impact Assessment



Hampshire
County Council

Stanmore Primary School

Accountable officer: Martin Shefferd

Email address: martin.shefferd@hants.gov.uk

Department: Children's Services

Date of
assessment: 04/03/2021

Description of current service/policy

Stanmore Primary School is a 315 place primary school in Winchester. This project does not provide any additional school places but does seek to address other accommodation issues for the school.

Geographical impact: Winchester

Description of proposed change

The current reception area is accessed through the front playground and up a flight of external steps which means security on the site is compromised. The proposed project provides a new school reception area, a refurbished Senior Leadership Team office, a relocated waiting area, new double-glazed external screens and a rationalised staff car park to the north of the site.

Impacts of the proposed change

This impact assessment covers Service users

Engagement and consultation

Has engagement or consultation been carried out? Yes

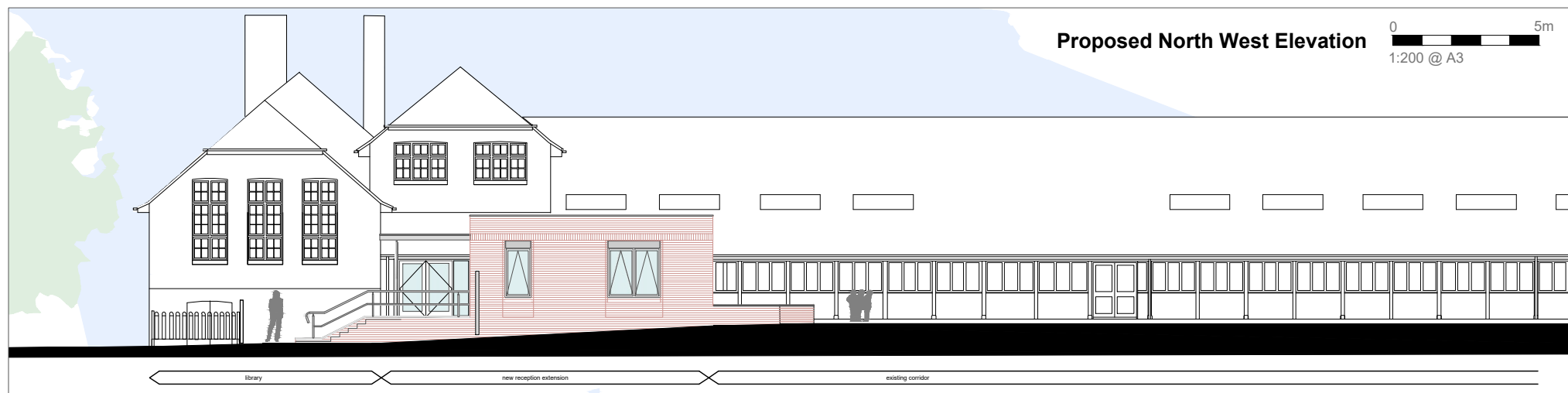
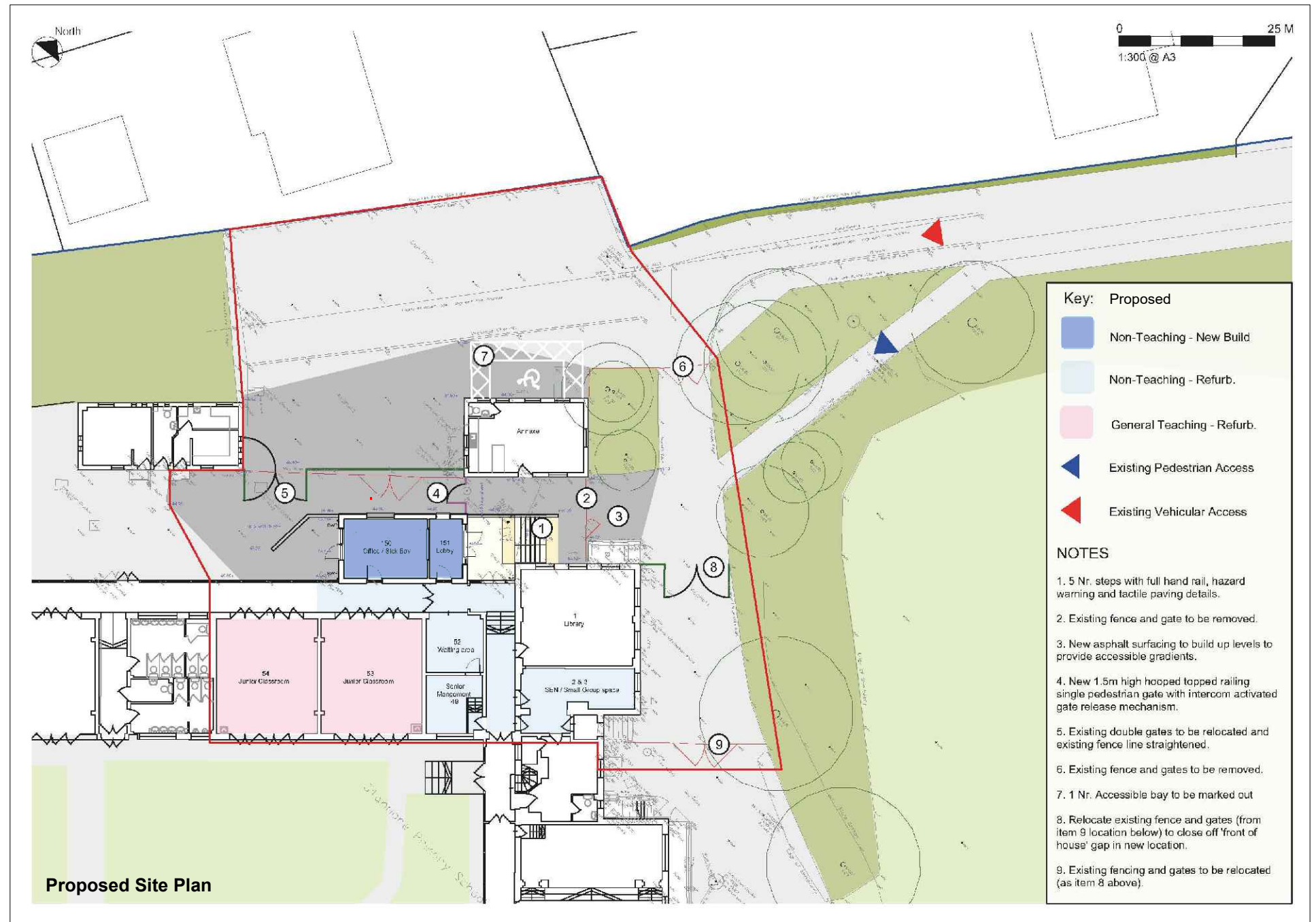
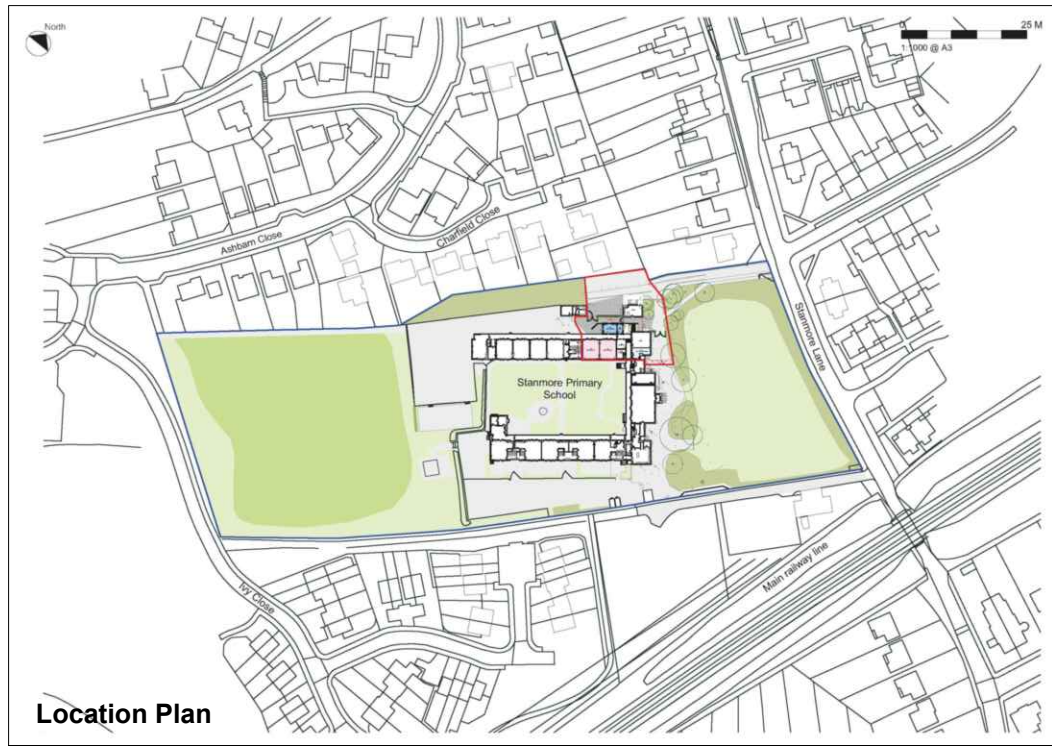
Stanmore Primary Headteacher
Stanmore Primary Governing Body
Hampshire County Council - Children's Services

Statutory considerations	Impact	Mitigation
Age: Neutral		
Disability: Positive	Easier access to the school reception for people with physical disabilities	
Sexual orientation: Neutral		
Race: Neutral		
Religion and belief: Neutral		
Gender reassignment: Neutral		
Gender: Neutral		
Marriage and civil partnership: Neutral		

Pregnancy and maternity: Neutral		
Other policy considerations	Impact	Mitigation
Poverty: Neutral		
Rurality: Neutral		

Neutrality statement (if all considerations have a neutral impact)

Any other information



Stanmore Primary School

Proposed New Reception and Entrance Redevelopment

Project Appraisal

Not to Scale

P12430-A-100

March 2021

This page is intentionally left blank

HAMPSHIRE COUNTY COUNCIL

Decision Report

Decision Maker:	Executive Member for Education and Skills
Date:	15 March 2021
Title:	South Farnborough Junior School
Report From:	Director of Culture, Communities and Business Services

Contact name: Steve Clow and Bob Wallbridge

Tel: 01962 847858
01962 847894

Email: steve.clow@hants.gov.uk
bob.wallbridge@hants.gov.uk

Purpose of this Report

1. The purpose of this report is to seek spend approval to the project proposal for South Farnborough Junior School.

Recommendation

2. That the Executive Member for Education and Skills grants spend approval to the project proposals for South Farnborough Junior School at the total cost of £290,000.

Executive Summary

3. South Farnborough Junior School provides education for 406 children (with a published admission number PAN of 95) aged between 7 and 10 years old.
4. The project proposals include an extension to the main school hall. The extension will increase the existing hall by around 35% and make a substantial improvement to the capacity and flexibility of the space.
5. The project is included in the Children Services Capital Programme, approved at the Executive Lead Member for Children's Services Decision Day on 13 January 2021 with a budget of £225,000. Following approval of the capital programme in January 2021, the cost of the scheme has increased by £65,000 due to the increased scope of the proposed works. This additional cost will be funded by an increase in the funding as shown in the table below.
6. A planning application was submitted in February 2021 and a decision is expected to be made in May 2021.

Background

7. South Farnborough Junior provides education for children aged between 7 and 10 years old. There are currently 406 pupils on roll. The numbers attending the school are not currently planned to increase as a result of these proposals.
8. The proposals seek to address shortcomings in the existing accommodation by extending the undersized main school hall.

Finance

9. Capital Expenditure:

The Capital Expenditure has already been approved in principle; the following tables outline the breakdown of its distribution across the project:

Capital Expenditure	Current Estimate £'000	Capital Programme £'000
Buildings	249	249
Fees	41	41
Total	290	290

10. Sources of Funding:

Financial Provision for Total Scheme	Buildings £'000	Fees £'000	Total Cost £'000
1. From Own Resources			
a) Capital Programme (as above)	249	41	290
Total	249	41	290

Building Cost:

Net Cost = not applicable (due to small scale / type of works)

Gross Cost = not applicable (due to small scale / type of works)

Cost Per Pupil Place - n/a no additional pupils

i. *Furniture & Equipment:*

No additional requirement.

ii. *School Balances:*

The school has the following level of balances:

Published revenue balance as at 31 March 2020: £12,704.09
Devolved capital as at 31 March 2020: £759.8

Revenue Issues:

iii. *Overview of Revenue Implications:*

	(a) Employees £'000	(b) Other £'000	(a+b) *Net Current Expenditure £'000	(c) Capital Charges £'000	(a + b + c) Total Net Expenditure £'000
Revenue Implications Additional + / Reductions	0	0	0	14	14

Details of Site and Existing Infrastructure

11. South Farnborough Junior School is located off Cunnington Road, Farnborough.
12. The school is set in parkland adjacent to the King George V Playing Fields, to which it has access. The original school building is a system-built SCOLA construction dating from 1971 which has been reclad as part of the County Council's ongoing programme in 2015/16.
13. The existing statutory services infrastructure will be upgraded to provide sufficient capacity to the school.

Scope of the Project

14. The proposed works are for an extension to the existing school hall which increases the space from 118sqm to 160 sqm (a 35% increase) and includes remodelling of some internal communal areas to facilitate it.

The Proposed Building Works

15. The proposed building works comprise:

Mechanical & Electrical	- Culture, Communities & Business Services
Structural Engineering	- Culture, Communities & Business Services
Quantity Surveying	- Culture, Communities & Business Services
Principal Designer	- Culture, Communities & Business Services
Drainage	- Economy, Transport and Environment

Consultation and Equalities

24. Children's Services, together with the School, have been consulted during the design development stages.
25. The following have been consulted during the development of this project and feedback can be seen in overview in Appendix A:

Headteacher
 School Governors
 Children's Services
 Executive Lead Member for Education and Skills
 Local County Councillor
 Local Residents
 Fire Officer
 Access Officer
 Planning Department

Risk & Impact Issues

Fire Risk Assessment

26. With respect to fire safety and property protection, the proposals have been risk assessed in line with the agreed Property Services procedures and confirmed that the provision of sprinklers is not required in this instance.
27. The proposals will meet the requirements of the Building Regulations (BB100 Fire Safety in Schools) and are consistent with current fire safety legislation, the partnership arrangement with Hampshire Fire and Rescue Services, and are in line with the County Council's policy to manage corporate risk.

Health and Safety

28. Design risk assessments, pre-construction health & safety information and a Health & Safety File will be produced in accordance with the Construction Design and Management Regulations for the proposed scheme.

Climate Change

29. The project will incorporate the following features to reduce energy consumption and mitigate the impact of climate change:
- A highly insulated building envelope for the extension including high performance windows and doors.
 - Provision of good levels of day lighting to extension to reduce the need for artificial lighting and energy use.
 - Energy efficient lighting and heating controls
 - The use of timber from sustainable sources.
 - A site waste management plan to ensure the principles of minimising waste are maintained during construction.

REQUIRED CORPORATE AND LEGAL INFORMATION:

Links to the Strategic Plan

Hampshire maintains strong and sustainable economic growth and prosperity:	yes
People in Hampshire live safe, healthy and independent lives:	yes
People in Hampshire enjoy a rich and diverse environment:	yes
People in Hampshire enjoy being part of strong, inclusive communities:	yes

Other Significant Links

Links to previous Member decisions:	
<u>Title</u> Childrens Services Capital Programme, Executive Lead Member for Children’s Services Decision Day	<u>Date</u> 13 Jan 2021

Section 100 D - Local Government Act 1972 - background documents	
<p>The following documents discuss facts or matters on which this report, or an important part of it, is based and have been relied upon to a material extent in the preparation of this report. (NB: the list excludes published works and any documents which disclose exempt or confidential information as defined in the Act.)</p>	
<u>Document</u>	<u>Location</u>
None	

EQUALITIES IMPACT ASSESSMENT:

1. Equality Duty

The County Council has a duty under Section 149 of the Equality Act 2010 ('the Act') to have due regard in the exercise of its functions to the need to:

- Eliminate discrimination, harassment and victimisation and any other conduct prohibited by or under the Act with regard to the protected characteristics as set out in section 4 of the Act (age, disability, gender reassignment, marriage and civil partnership, pregnancy and maternity, race, religion or belief, sex and sexual orientation);
- Advance equality of opportunity between persons who share a relevant protected characteristic within section 149(7) of the Act (age, disability, gender reassignment, pregnancy and maternity, race, religion or belief, sex and sexual orientation) and those who do not share it;
- Foster good relations between persons who share a relevant protected characteristic within section 149(7) of the Act (see above) and persons who do not share it.

Due regard in this context involves having due regard in particular to:

- The need to remove or minimise disadvantages suffered by persons sharing a relevant protected characteristic that are connected to that characteristic;
- Take steps to meet the needs of persons sharing a relevant protected characteristic that are different from the needs of persons who do not share it;
- Encourage persons sharing a relevant protected characteristic to participate in public life or in any other activity in which participation by such persons is disproportionately low.

2. Please see Appendix B for the Equalities Impact Assessment Page.

FEEDBACK FROM CONSULTEES:**OTHER EXECUTIVE MEMBERS:**

Executive Member & Portfolio	Reason for Consultation	Date Consulted	Response:
Councillor Patricia Stallard, Executive Lead Member for Children's Services and Young People	Portfolio Holder		

OTHER FORMAL CONSULTEES:

Member/ Councillor	Reason for Consultation	Date Consulted	Response:
Councillor Roland Dibbs	Local Member for Farnborough South		

Your reference number is EIA311225542.

Thank you for submitting Equality Impact Assessment

Name of project or proposal (required): South Farnborough Junior School – Hall Extension

Is this project a Transformation project? (required): Neither

Name of accountable officer (required): Glenn Parkinson

Email (required): strategicplanningunit@hants.gov.uk

Department (required): Children's Services

Date of assessment (required): 26/02/2021

Is this a detailed or overview EIA? (required): Overview

Describe the current service or policy. This question has a limit of 700 characters; approximately 100 words (required): South Farnborough Junior School is currently a 3fe (96 PAN) junior school at a site in Cunnington Road, Farnborough.

Geographical impact (required): Rushmoor

Describe the proposed change. This question has a limit of 700 characters; approximately 100 words (required): Extension to the school hall.

Who does this impact assessment cover? (required): Service users

Has engagement or consultation been carried out? (required): No

Describe the consultation or engagement you have performed or are intending to perform. This question has a limit of 700 characters; approximately 100 words (required): Discussions were held between the Headteacher, Governors and HCC. No consultation was required in terms of the hall extension.

Age (required): Neutral

Disability (required): Positive

Impact (required): The extended hall will provide more accessible indoor space for PE.

Sexual orientation (required): Neutral

Race (required): Neutral

Religion or belief (required): Neutral

Gender reassignment (required): Neutral

Gender (required): Neutral

Marriage or civil partnership (required): Neutral

Pregnancy and maternity (required): Neutral

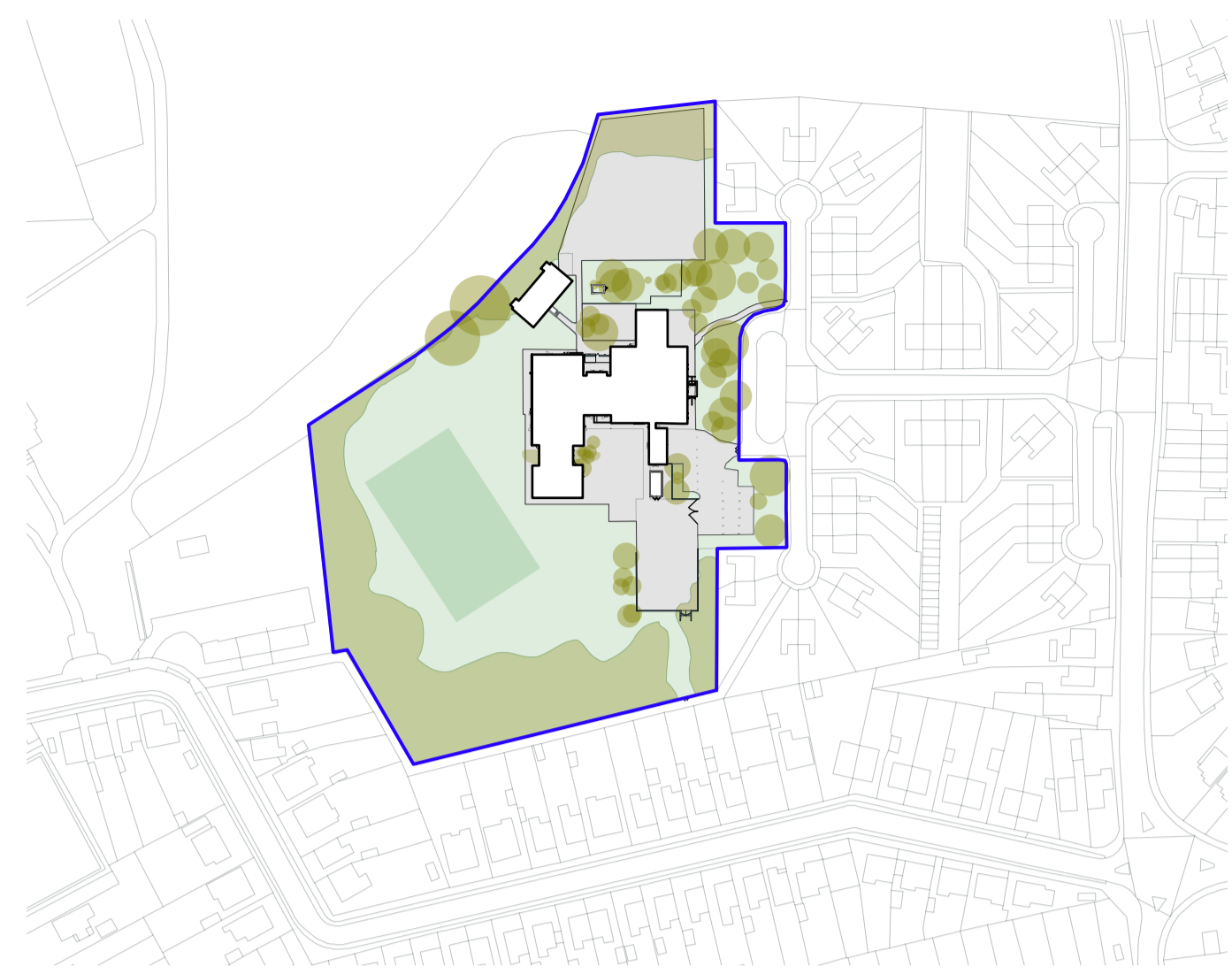
Poverty (required): Neutral

Rurality (required): Neutral

Any other brief information which you feel is pertinent to this assessment (optional):

Please confirm that the accountable officer has agreed the contents of this form (required): Yes

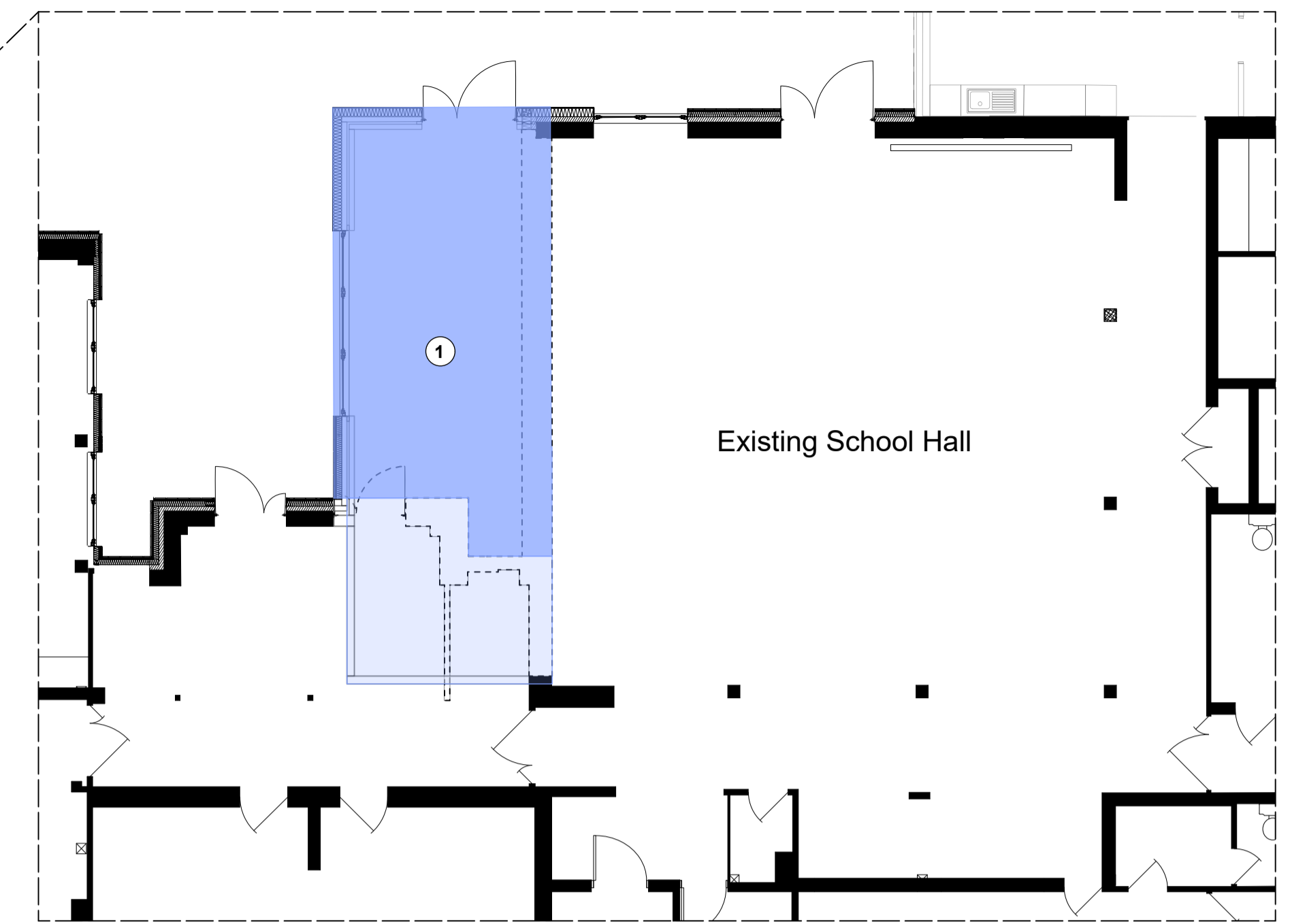
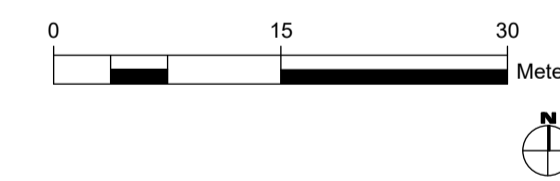
This page is intentionally left blank



LOCATION PLAN
1:2000



PROPOSED SITE PLAN
1:500



PROPOSED HALL EXTENSION
1:100

Key:

1 Proposed Hall Extension

▶ Pedestrian Access

▶ Vehicular Access

▶ Contractor Access

← Main Entrance

□ Development Boundary

□ HCC Site Boundary

■ Teaching - New Build

■ Non Teaching - New Build

■ Circulation - New Build

■ Teaching - Refurbishment

■ Non Teaching - Refurbishment

■ Circulation - Refurbishment

□ Not Affected



PART WEST ELEVATION - PROPOSED
1:100



NORTH ELEVATION - PROPOSED
1:100

Rev	Description	Date	By	Chkd
P2	'Existing School Hall' note added to 1:100 plan	22/02/21	AT	PA
P1	Project Appraisal	08/02/21	AT	PA

General Notes

- This drawing is © copyright Hampshire County Council 2019. No unauthorised reproduction of any kind is permitted.
- No dimensions to be scaled from this drawing. Verify all dimensions prior to construction. Immediately report any discrepancies on the document to the Architect/Contract Administrator. This document shall be read in conjunction with associated models, specifications and related consultant's documents.
- Drawing to be read with all relevant Architectural, Interiors, Structural, M&E, Drainage/Public Health, Landscape, Civils and Interiors drawings and specifications.
- This map is reproduced from Ordnance Survey material with the permission of Ordnance Survey on behalf of the controller of Her Majesty's Stationery Office © Crown copyright. Unauthorised reproduction infringes Crown Copyright & may lead to prosecution or civil proceedings (100019180) 2019.

HCC Property Services,
Three Minsters House,
76 High Street, Winchester SO23 8UL
tel: (01962) 947801



PROJECT NAME
South Farnborough Junior School

SHEET NAME
Project Appraisal

SCALE **DRAWN** **CHKD** **APRV**

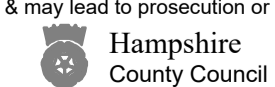
VARIES **AT** **PA** **PA**

DRAWING No. project code - originator - volume - level - type - role - number version

P12589-HCC-ZZ -00-DR-A-1010 P2 00

SUITABILITY code description

S4 SUITABLE FOR STAGE APPROVAL



This page is intentionally left blank